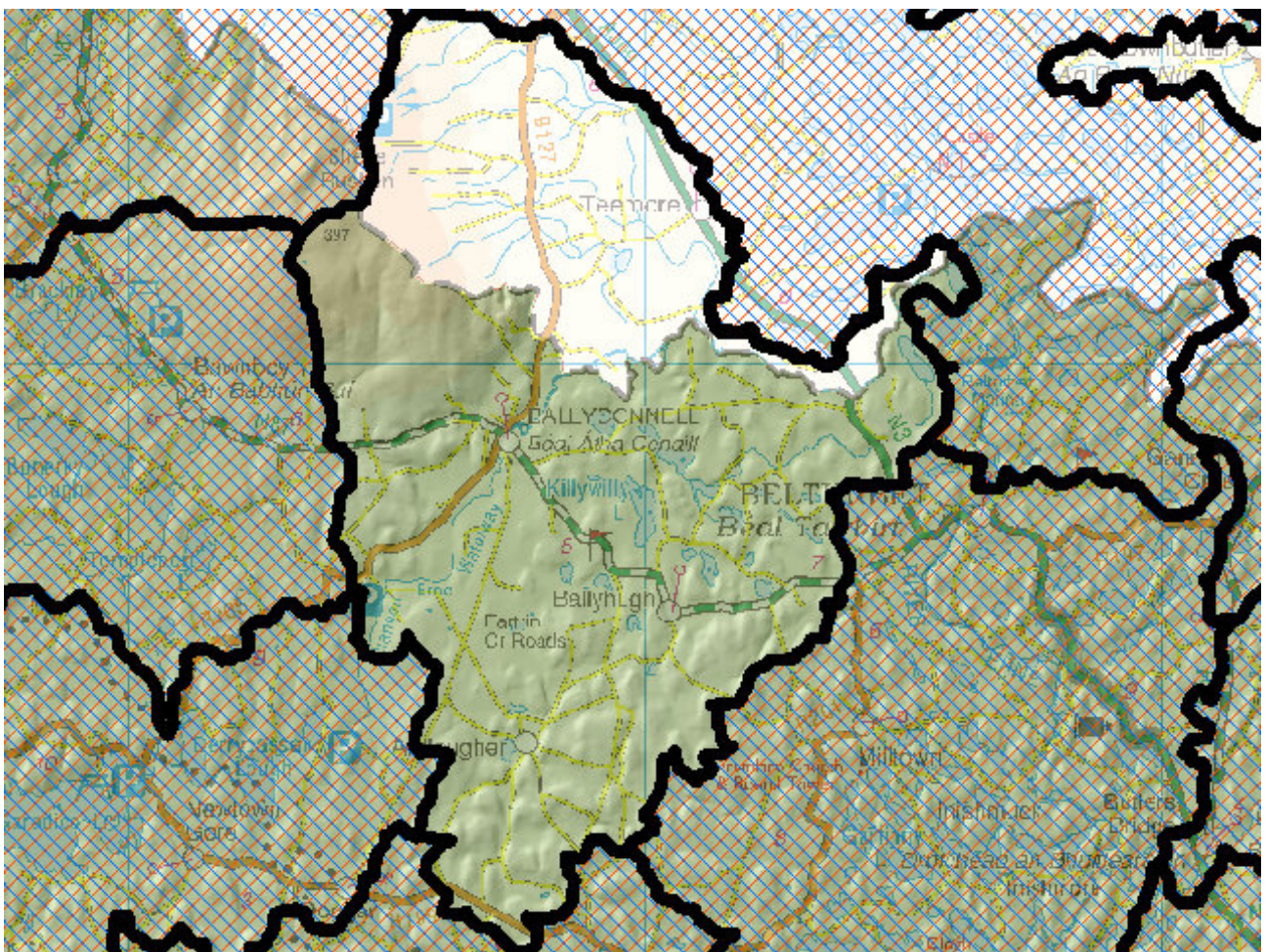


# WFD Cycle 2

Catchment Erne

Subcatchment Woodford[Cavan]\_SC\_010

Code 36\_13



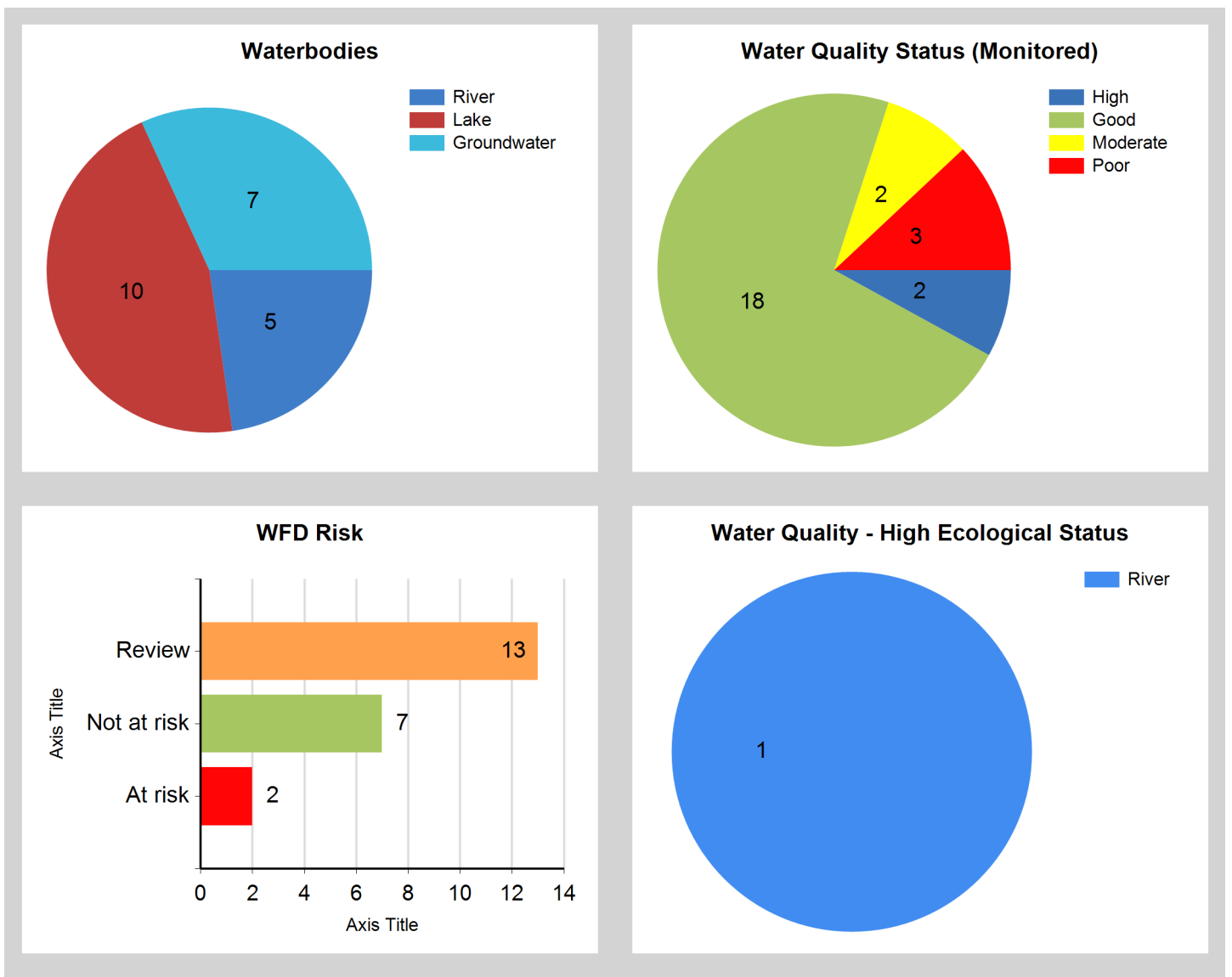
© Ordnance Survey Ireland. All rights reserved. Licence Number EN 0059208

Generated on: 16 Jan 2019

## Assessment Purpose

This assessment has been produced as part of the national characterisation programme undertaken for the second cycle of Water Framework Directive river basin management planning. It has been led by the EPA, with input from Local Authorities and other public bodies, and with support from RPS consultants.

The characterisation assessments are automatically generated from the information stored in the WFD Application. They are based on information available to the end of 2015 but may be subject to change until the final 2018-21 river basin management plan is published. Users should ensure that they have the most up to date information by downloading the latest assessment before use.



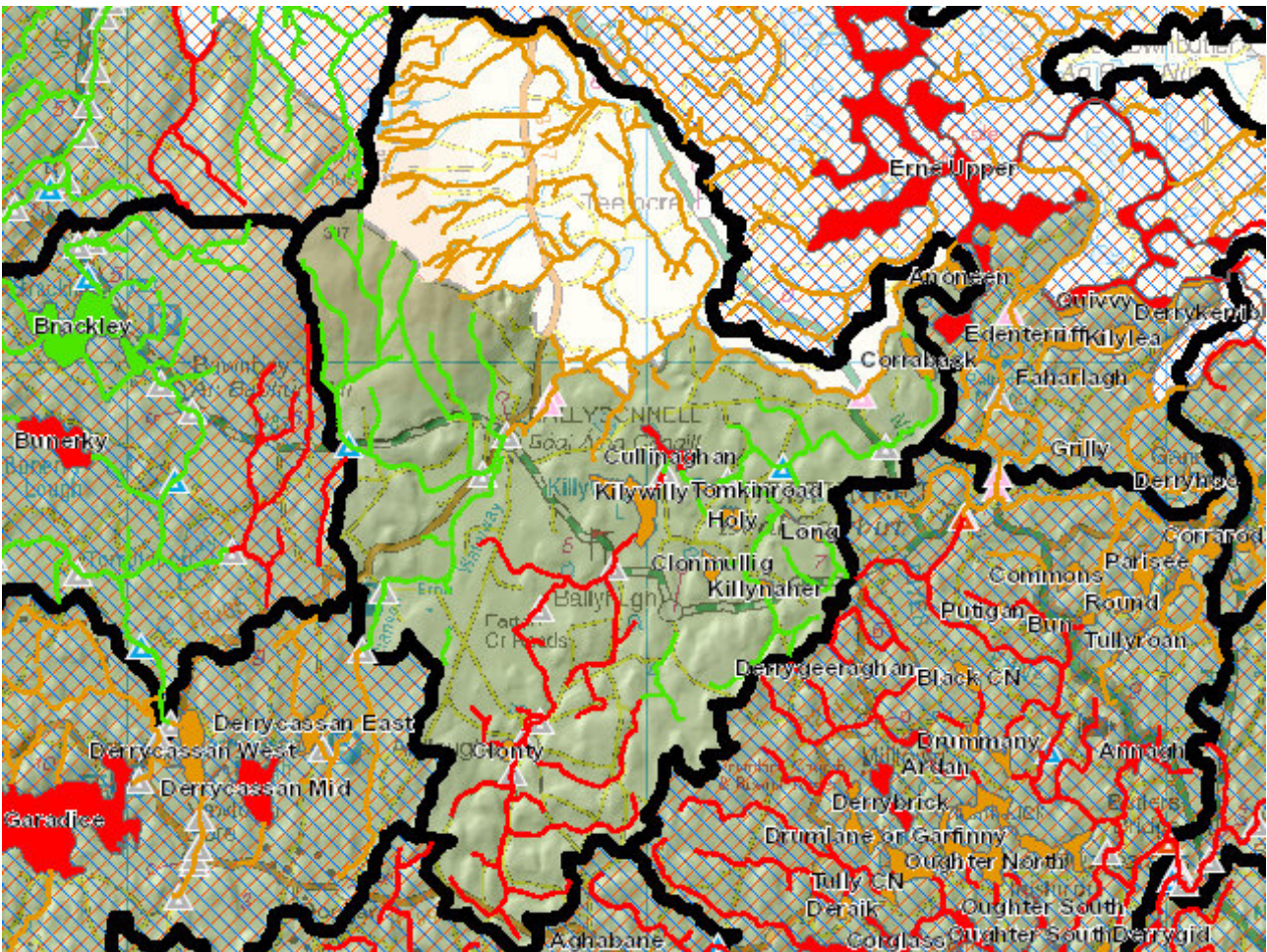
## Evaluation of Priority Subcatchment Issues

The Rag (Cavan)\_010 is one out of five river water bodies within the subcatchment that is AT RISK, with impacted biological conditions driving risk. Derryhooley Tributary and Woodford River are under REVIEW due to their unassigned status but the latter water body was identified as being of High ecological status (2009-2014) by NI-EA. Rag (Cavan)\_020 and Woodford (Cavan)\_020 are NOT AT RISK, with the latter water body meeting its High Ecological Status objective. Nine out of ten lake water bodies are unassigned and therefore under REVIEW. The remaining lake water body, Cullinaghan Lough, is AT RISK due to biological impacts and elevated phosphate.

The lack of available data for the majority of the water bodies in this sub-catchment makes it difficult to be conclusive, however it is highly likely that agriculture is a significant pressure, with overland flow as the primary pathway. In addition, forestry and peat contribute as pressures along with channelisation.

Local catchment assessments will be carried out to determine water quality within the unassigned water bodies.

## Map Subcatchment Risk Map

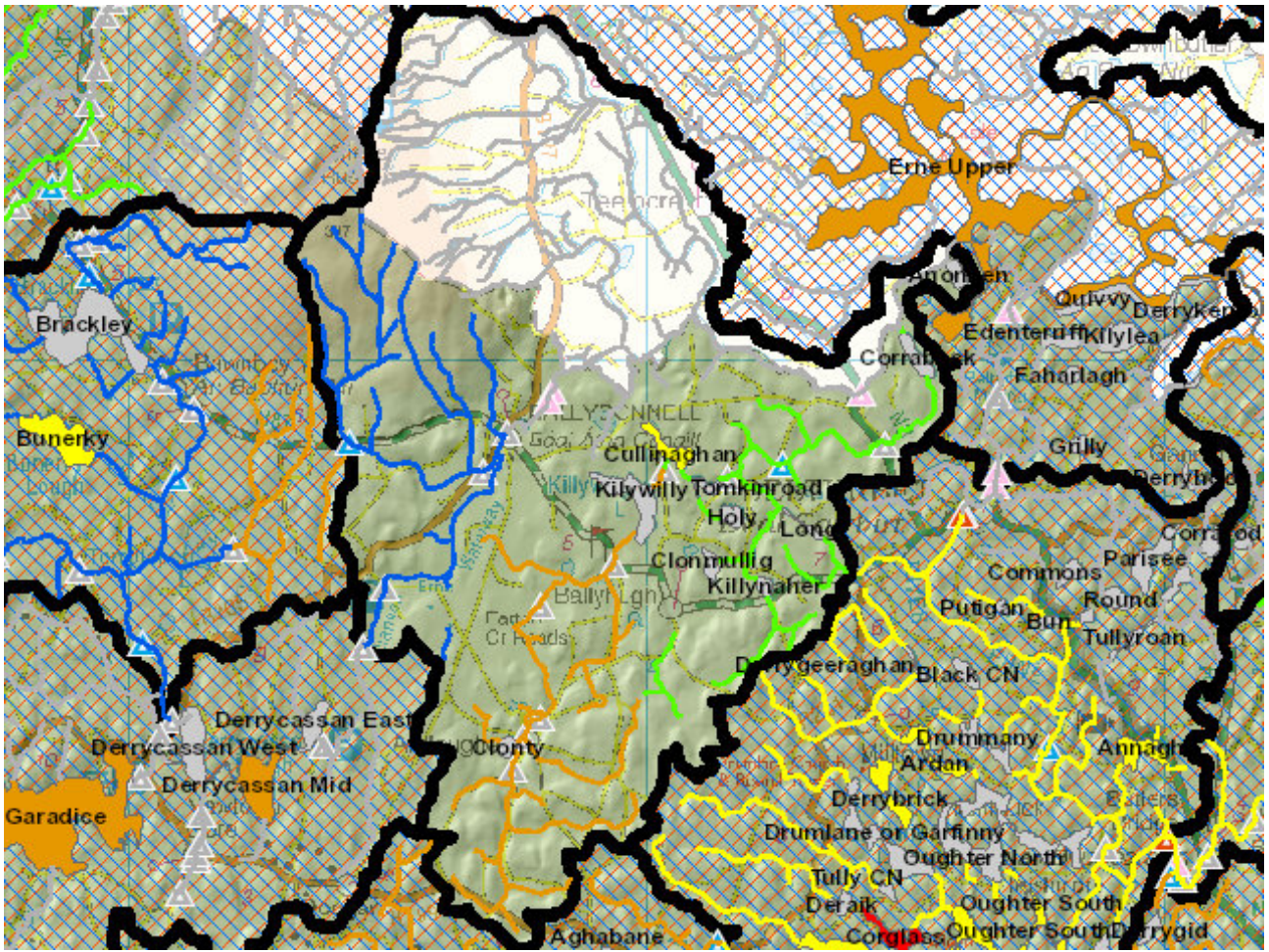


## River And Lake Waterbodies: WFD Risk

The following river and lake waterbodies are in the subcatchment.

Code	Name	Type	WFD Risk	Significant Pressure
IE_NW_36_385	Cullinaghan	Lake	At risk	Yes
IE_NW_36R010600	RAG (CAVAN)_010	River	At risk	Yes
IE_NW_36_207	Holy	Lake	Review	Yes
IE_NW_36_247	Clonmullig	Lake	Review	Yes
IE_NW_36_391	Anoneen	Lake	Review	Yes
IE_NW_36_410	Tomkinroad	Lake	Review	Yes
IE_NW_36_468	Clonty	Lake	Review	Yes
IE_NW_36_470	Corraback	Lake	Review	Yes
IE_NW_36_486	Killynaher	Lake	Review	Yes
IE_NW_36_500	Long	Lake	Review	Yes
IE_NW_36_513	Kilywilly	Lake	Review	Yes
UKGBNI1NW363602029	Derryhooley Tributary	River	Review	Yes
UKGBNI1NW363604083	Woodford River	River	Review	Yes

## Map Subcatchment Water Quality Status Map



## River And Lake Waterbodies: Water Quality Status

The water quality status of river and lake waterbodies in the subcatchment is as follows.

Code	Name	Type	2007-09	2010-12	2010-15
IE_NW_36_391	Anoneen	Lake	Unassigned	Unassigned	Unassigned
IE_NW_36_247	Clonmullig	Lake	Unassigned	Unassigned	Unassigned
IE_NW_36_468	Clonty	Lake	Unassigned	Unassigned	Unassigned
IE_NW_36_470	Corraback	Lake	Unassigned	Unassigned	Unassigned
IE_NW_36_385	Cullinaghan	Lake	Moderate	Poor	Moderate
UKGBNI1NW36360 2029	Derryhooley Tributary	River	Unassigned	Unassigned	Unassigned
IE_NW_36_207	Holy	Lake	Unassigned	Unassigned	Unassigned
IE_NW_36_486	Killynaher	Lake	Unassigned	Unassigned	Unassigned
IE_NW_36_513	Kilywilly	Lake	Unassigned	Unassigned	Unassigned
IE_NW_36_500	Long	Lake	Unassigned	Unassigned	Unassigned
IE_NW_36R010600	RAG (CAVAN)_010	River	Unassigned	Poor	Poor
IE_NW_36R010800	RAG (CAVAN)_020	River	Good	Good	Good
IE_NW_36_410	Tomkinroad	Lake	Unassigned	Unassigned	Unassigned
IE_NW_36W01040 0	WOODFORD (CAVAN)_020	River	Good	High	High
UKGBNI1NW36360 4083	Woodford River	River	Unassigned	Unassigned	Unassigned

## Potentially Dependent Transitional and Coastal Waterbodies

The Transitional and Coastal waterbodies listed below intersect spatially with river and lake waterbodies in the subcatchment ...

Code	Name	Type	Local Authority	WFD Risk
------	------	------	-----------------	----------

## Potentially Dependent Groundwater Waterbodies

The groundwaters listed below intersect spatially with river and lake waterbodies in the subcatchment ...

Code	Name	Type	Local Authority	WFD Risk
IE_NW_G_062	Killashandra	Groundwater	Cavan County Council	Not at risk
IEGBNI_NW_G_03 0	Crom Castle	Groundwater	Cavan County Council	Review
IEGBNI_NW_G_03 1	Newtown-Ballyconnell	Groundwater	Cavan County Council	Not at risk
IEGBNI_NW_G_03 2	Derrylin	Groundwater	Cavan County Council	Not at risk
IEGBNI_NW_G_03 3	Slieve Rushen South	Groundwater	Cavan County Council	Not at risk
IEGBNI_NW_G_03 9	Slieve Rushen	Groundwater	Cavan County Council	Not at risk
IEGBNI_NW_G_06 3	Clones	Groundwater	Monaghan County Council	Review

## Protected Areas intersecting River and Lake Waterbodies

The Protected Areas listed below intersect spatially with river and lake waterbodies in the subcatchment ...

Code	Name	Type	Waterbody Name	Association Type
------	------	------	----------------	------------------

## Pressures

Below is a list of all significant pressures identified in the subcatchment.

Code	Name	WFD Risk	Pressure Category	Pressure Sub Category
IE_NW_36_385	Cullinaghan	At risk	Agriculture	Pasture
IE_NW_36R010600	RAG (CAVAN)_010	At risk	Agriculture	Pasture
IE_NW_36R010600	RAG (CAVAN)_010	At risk	Hydromorphology	Channelisation
IE_NW_36_207	Holy	Review	Agriculture	Pasture
IE_NW_36_247	Clonmullig	Review	Agriculture	Pasture
IE_NW_36_247	Clonmullig	Review	Forestry	Forestry
IE_NW_36_468	Clonty	Review	Extractive Industry	Peat
IE_NW_36_470	Corraback	Review	Agriculture	Pasture
IE_NW_36_486	Killynaher	Review	Agriculture	Pasture
IE_NW_36_500	Long	Review	Forestry	Forestry
IE_NW_36_500	Long	Review	Agriculture	Pasture
IE_NW_36_513	Kilywilly	Review	Extractive Industry	Peat
IEGBNI_NW_G_030	Crom Castle	Review	Anthropogenic Pressures	Unknown
IEGBNI_NW_G_063	Clones	Review	Anthropogenic Pressures	Unknown
UKGBNI1NW363604083	Woodford River	Review	Urban Waste Water	Agglomeration PE of 1,001 to 2,000
UKGBNI1NW363604083	Woodford River	Review	Agriculture	Pasture

## Further Characterisation Actions

The following further characterisation actions have been identified. These are necessary to help understand more fully issues in the subcatchment and their likely cause.

Code	Name	Action	Responsible Organisation
IE_NW_36_470	Corraback	IA1 Provision of Information	Cavan County Council
IE_NW_36_385	Cullinaghan	IA9 Lake pressures	Cavan County Council
IE_NW_36_410	Tomkinroad	IA1 Provision of Information	Cavan County Council
UKGBNI1NW363602029	Derryhooley Tributary	IA1 Provision of Information	Northern Ireland Environment Agency
IE_NW_36_486	Killynaher	IA1 Provision of Information	Cavan County Council
IE_NW_36R010600	RAG (CAVAN)_010	IA7 Multiple Sources in Multiple Areas	Cavan County Council
IE_NW_36_247	Clonmullig	IA3 Determination of Water Quality (unassigned waterbody)	Cavan County Council
IE_NW_36_468	Clonty	IA3 Determination of Water Quality (unassigned waterbody)	Cavan County Council
IE_NW_36_391	Anoneen	IA3 Determination of Water Quality (unassigned waterbody)	Cavan County Council
IE_NW_36R010600	RAG (CAVAN)_010	IA1 Provision of Information	Cavan County Council
IE_NW_36_207	Holy	IA3 Determination of Water Quality (unassigned waterbody)	Cavan County Council
UKGBNI1NW363604083	Woodford River	IA3 Determination of Water Quality (unassigned waterbody)	Cavan County Council
IE_NW_36_513	Kilywilly	IA3 Determination of Water Quality (unassigned waterbody)	Cavan County Council
IE_NW_36_500	Long	IA1 Provision of Information	Cavan County Council